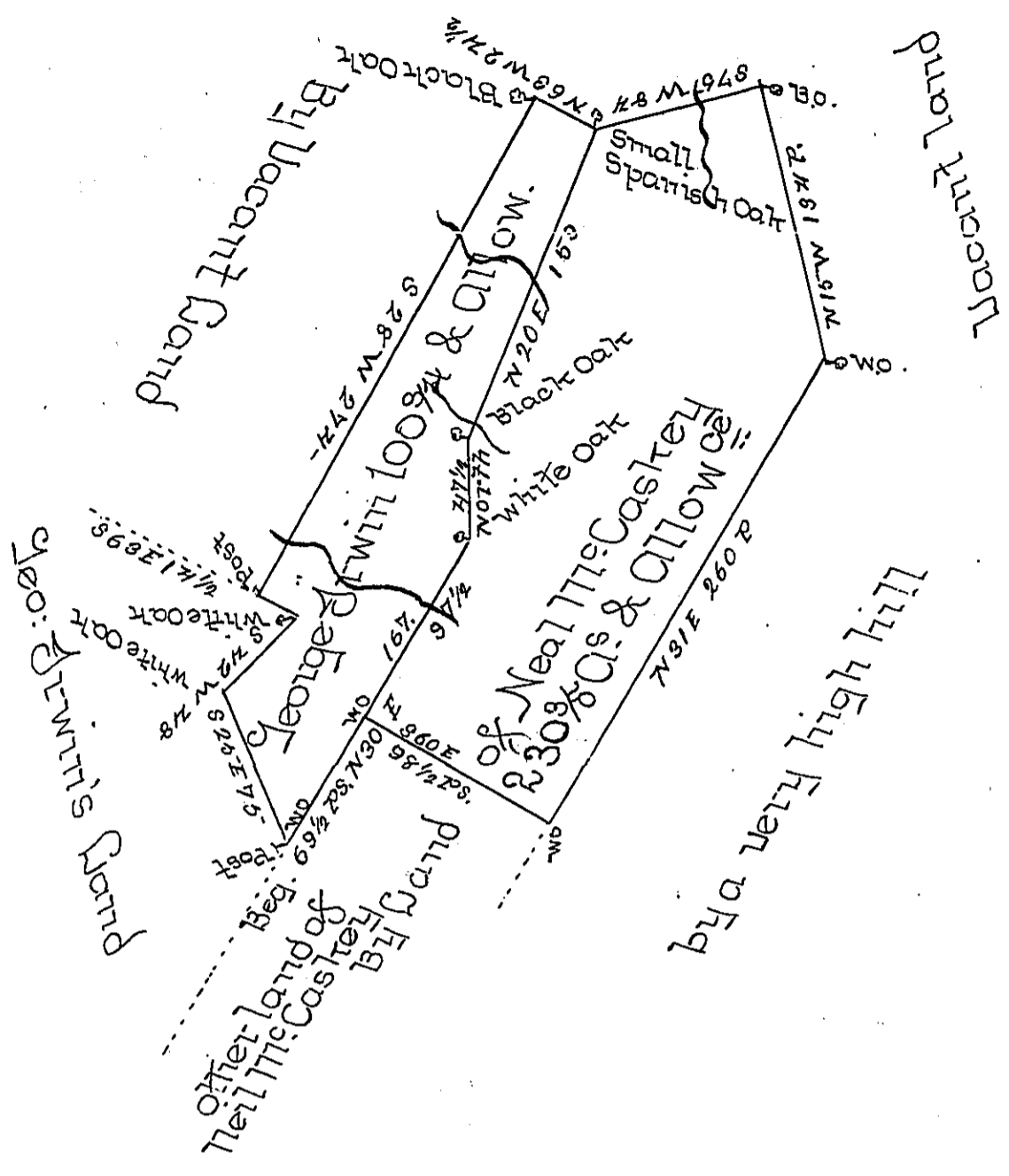


Docks Mountain

Acres
 230 3/8 & Allowance on NE 1/4 to Neal McCastel of 11th February 1755
 100 3/4 on NE 1/4 as below to George Drwin 19th Decemr 1770
 Total
 331 1/8



The Draught of a Tract of Land called _____ situate in
 the Long Hollow - in the County of Cumberland in
 Germanough Township containing One hundred Ac-
 res, 124 Perches with usual Allowance for Roads. Surveyed
 the 2d day of October Anno. Dom: 1771 in Pursuance
 of a Warrant from the Honble the Proprietaries to George
 Drwin bearing Date at Philad^a the 19th day of Decemr
 Anno. Dom: 1770 &

Wm MacLay

To John Lukens Esq: Secy. }
 of Pennsylvania - }
 230 3/8

IN TESTIMONY that the above is a copy of the original remaining on file in
 the Department of Internal Affairs of Pennsylvania, made
 conformably to an Act of Assembly approved the 16th day of
 February, 1833, I have hereunto set my Hand and caused
 the Seal of said Department to be affixed at Harrisburg,
 this fourth day of October 1898.

James W. Patton
 Secretary of Internal Affairs.